

NEWS RELEASE

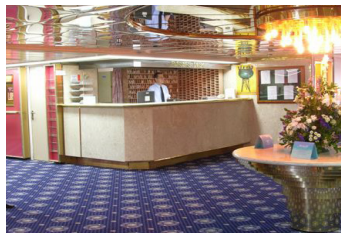
CLIPPER PEARL (ex Dream, ex Song of Norway)



MIAMI, FLORIDA November 27, 2007



ISP has taken delivery of the cruise vessel CLIPPER PEARL (ex Dream, ex Song of Norway), on behalf of the owners Pearl Owner Ltd., a company in the CLIPPER GROUP. The vessel has been positioned to Turkey, where she will spend the next four to five months being upgraded, and will be ready for charter by April/May 2008.



ISP is the Administrative Manager of the Pearl Owner Ltd, and the Commercial and Technical Manager of the Vessel.

Charter enquiries for this vessel should be sent to Niels-Erik Lund at nlund@isp-usa.com



SHIP SPECIFICATIONS

| | |
|---------------|-----------------|
| Tonnage: | GT 22,945 |
| Length (LOA): | 194.32 M |
| Beam: | 24.0 M |
| Draft: | 6.70 M |
| Speed: | 18.0 K |
| Capacity: | 1258 passengers |

For more information on this announcement, or for other inquiries, please contact International Shipping Partners, Inc. ISP's headquarters are in Miami, Florida and can be reached by calling 1 305 573 6355, or email isp@isp-usa.com.